

[http://www.travelportland.com/visitors/visguide/attractions\\_portland.html](http://www.travelportland.com/visitors/visguide/attractions_portland.html)

## 4. Portland Art Museum

Find out why the oldest museum in the Northwest, the Portland Art Museum, is internationally renowned for exciting art experiences. Located in the heart of downtown's cultural district, the Museum's campus includes an outdoor sculpture court and historical interiors. Tour the world and travel through history in magnificent permanent collection galleries, six stories of modern art and special exhibitions that include: *Klaus Moje* (May 31-Sept. 7, 2008), *Contemporary Northwest Art Awards* (June 14-Sept. 14, 2008), *Wild Beauty* (Oct. 4, 2008-Jan. 11, 2009), *French Painting in the Age of Madame de Pompadour* (Feb. 15-May 15, 2009). Join us for lectures, tours, art-making and activities for the whole family. Part of the Portland Attractions Pass.

1219 S.W. Park Avenue  
Portland, Ore. 97205  
503.226.2811  
[www.portlandartmuseum.org](http://www.portlandartmuseum.org)



## 5. Pittock Mansion

Experience the charm of a lost era as you learn about Henry and Georgiana Pittock and the beautiful estate that symbolizes the growth of Portland. Admire remarkable antique furnishings and fine arts set in a 1914 National Historic Register property. Pack a picnic basket and enjoy a sweeping view of mountains, rivers and the city. And don't forget your camera. Located just five minutes from downtown Portland off West Burnside Street. Open daily: June-August, 11 a.m. to 4 p.m.; September-May, 12-4 p.m. Closed January and some holidays. Admission charged. Part of the Portland Attractions Pass.

3229 N.W. Pittock Drive  
Portland, Ore. 97210  
503.823.3623  
[www.pittockmansion.org](http://www.pittockmansion.org)



## 8. Portland Children's Museum

Visit Portland Children's Museum and let your creativity run wild with hands-on exhibits and art studios for children and their families. Dig into the fun in the Dig Pit. Tile a roof or landscape a garden in Building Bridgetown. Make a Splash in Water Works. Role-play in the Grasshopper Grocery and Butterfly Bistro. Enjoy a live performance or sculpt a unique creation from clay. Paint your face, put on a costume and take center stage! Open daily from 9 a.m. to 5 p.m. Closed Mondays from September-February. Portland Children's Museum. Where imagination lives. Part of the Portland Attractions Pass.

Washington Park  
S.W. Canyon Road  
Portland, Ore. 97221  
503.223.6500  
[www.portlandcm.org](http://www.portlandcm.org)



## 9. Oregon Zoo

Trek through the tropics amid the sounds of birds, monkeys and other creatures. You're not in West Africa; you're in Portland at the zoo's African Rain Forest exhibit. After you've survived the steamy tropics, dry off in the savanna, where giraffes, rhinos and hippos graze. From the tundras of Alaska to the coastal waters of Peru, travel around the world in an afternoon. Open daily at 9 a.m.; closing hours are seasonal. Admission charged; children two and younger free. Five minutes from downtown on Hwy. 26 West, or take MAX light rail. Part of the Portland Attractions Pass.

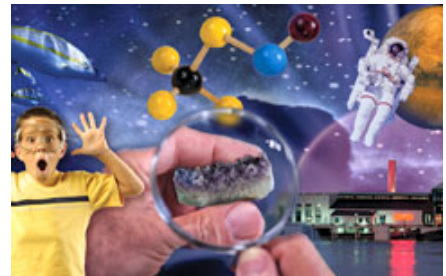
Washington Park  
4001 S.W. Canyon Road  
Portland, Ore. 97221  
503.226.1561  
[www.oregonzoo.org](http://www.oregonzoo.org)



## 10. Oregon Museum of Science and Industry (OMSI)

One of the nation's leading science museums, OMSI is 219,000 square feet of brain-powered fun! Five enormous halls bring science to life with hundreds of interactive exhibits and displays. You can experience an earthquake, take part in live lab demonstrations, see a movie in the OMNIMAX® Dome Theater, explore the universe in a world-class planetarium and even tour a real submarine! Dine at our riverfront Market Café and visit the Science Store for the best in science books, games and gadgets. Located on the east bank of the Willamette River. Open Tuesday through Sunday from 9:30 a.m. to 5:30 p.m. Summer hours: (June 16-Sept. 1) Open daily from 9:30 a.m. to 7 p.m. Part of the Portland Attractions Pass.

1945 S.E. Water Avenue  
Portland, Ore. 97214  
503.797.4000  
[www.oms.edu](http://www.oms.edu)



## 12. The Pearl District

Historic industrial buildings have been transformed into hip retail storefronts, restaurants, galleries, lofts and spas in Portland's premier shopping district. The Pearl District is a nationally renowned destination for fine dining, more than 60 home furnishings stores, art and one-of-a-kind boutiques. After shopping, relax at one of our picturesque sidewalk cafés or enjoy the fountains in Jamison Square Park. More than 100 city blocks of shops, restaurants and galleries are open seven days a week, year-round. Easily accessible, The Pearl District is only a short walk or streetcar ride from downtown Portland; accessible via US-26/I-405 (Exit 2B) and the Burnside, Broadway and Steel Bridges.

Northwest Portland  
Boundaries: West Burnside Road to the south;  
Willamette River to the north; N.W. Broadway  
to the east; N.W. 16th to the west  
[www.explorethepearl.com](http://www.explorethepearl.com)



### 13. Portland Saturday Market

Stroll down row upon row of local handcrafted items and homemade foods. The Portland Saturday Market-open Sundays too-is the nation's largest open-air crafts market. Talk directly to the artists and learn about their creative styles and products. Rain or shine, we are open Saturday (10 a.m. to 5 p.m.) and Sunday (11 a.m. to 4:30 p.m.) from March through Christmas Eve. Portland Saturday Market is located in Portland's historic Old Town. Take the MAX to the Skidmore Fountain stop. Make a \$25 purchase and receive a free TriMet ticket or a two hour parking validation at any Smart Park garage.

S.W. Ankeny & Naito Parkway  
Portland, Ore. 97209  
503.222.6072  
www.PortlandSaturdayMarket.com



### 14. Oaks Amusement Park

Rides, go-karts, roller skating, picnic grounds, an historic dance pavilion and waterfront views make up this jewel of an amusement park only minutes from downtown Portland. Safe, wholesome, affordable family fun is always on the menu along with fries, hamburgers, corn dogs, cotton candy and more. Birthday parties, corporate picnics and family and class reunions are a few reasons why people visit. Families can come for a whole day of fun without breaking the bank. Bring your own picnic, order from the snack stands, or enjoy our catering department. Free parking, no admission charge and summer ride discounts. Safe, wholesome, affordable family fun-right in Portland's back yard.

7805 S.E. Oaks Park Way  
Portland, Ore. 97202  
503.233-5777  
www.oakspark.com



### 15. Portland Spirit

The *Portland Spirit* welcomes you aboard the Northwest's premier dining ship. Daily lunch and dinner cruises offer a perfect opportunity to surround yourself with unmatched views of the Portland skyline. Freshly prepared cuisine, full-service bars and live entertainment complete a river experience unlike any other.

Office: 110 S.E. Caruthers Street  
Portland, Ore. 97214  
503.224.3900 | 800.224.3901  
www.portlandspirit.com



## 16. International Rose Test Garden

Visit one of the largest and oldest rose test gardens in the country-for free. The International Rose Test Garden, just minutes from downtown Portland in Washington Park, has 7,000 rose bushes, spectacular views of the city and an onsite Rose Garden Gift Shop (call for hours). The garden is open daily, 7 a.m. to 9 p.m. Local tip: During summer, visit in the early evening when it's cooler and less crowded. Additionally, Peninsula Park Rose Garden has 6,500 rose plantings and is located in North Portland; and Ladd's Addition Garden, which features 3,000 roses, sits in the historic Southeast Portland neighborhood of the same name.

Washington Park | 400 S.W. Kingston Avenue  
Portland, Ore. 97205  
503.823.3636 | Gift Shop 503.227.7033  
[www.portlandparks.org/gardens/introsetestgarden.htm](http://www.portlandparks.org/gardens/introsetestgarden.htm)



## 18. Lloyd Center Ice Rink

Enjoy indoor ice skating at the Lloyd Center Ice Rink, located in Oregon's largest mall. The ice rink is a fun place to skate and build memories. Those who don't skate can shop tax-free at the mall's 200 stores or enjoy a meal in the food court, which overlooks the rink. On Friday and Saturday nights, 7:30-10 p.m., the rink offers "Rock and Skate," featuring a live DJ (\$6 per person, including skate rental). Lloyd Center is located in "Fareless Square," making it easily accessible via MAX light rail. Public skating every day; call for times.

Inside Lloyd Center Mall, Lower Level  
N.E. Ninth Avenue at Multnomah Street  
Portland, Ore. 97232  
503.288.6073  
[www.lloydcenterice.com](http://www.lloydcenterice.com)



## 19. Willamette Jetboat Excursions

See Portland's waterfront and more aboard the Willamette Jetboats. Enjoy the area's sights, history and scenic beauty while experiencing the fun and excitement found only in a jet boat. See giant ships, bridges, elegant riverfront homes, historic Oregon City and the majestic Willamette Falls. Two-hour excursions start at \$33 for adults; lower prices for children. One-hour trips are also available in July and August. Reservations highly recommended.

1945 S.E. Water Avenue  
OMSI Submarine Dock  
Portland, Ore. 97214  
503.231.1532 | 888.JETBOAT (538.2628)  
[www.willamettejet.com](http://www.willamettejet.com)





## 2. Multnomah Falls Lodge

Multnomah Falls Lodge, located just 30 miles east of Portland off I-84, offers breathtaking views of the second-highest year-round waterfall in the United States. Nestled in the heart of the scenic Columbia River Gorge, the Multnomah Falls area features tree-lined hiking trails to the top of the 620-foot falls, an interpretive center and gift shop, as well as a charming old-world lodge that offers Northwest cuisine for breakfast, lunch and dinner. Open daily from 8 a.m. to 9 p.m.  
Columbia Gorge Historic Hwy.  
Interstate 84, Exit 31  
503.695.2376  
www.multnomahfallslodge.com



## 6. Mt. Hood Skibowl & Summer Action Park

In the winter, Mt. Hood Skibowl offers “the most night skiing terrain in North America” according to Ski Magazine, the closest skiing to Portland, and some of the most advanced terrain on Mt. Hood. Skibowl also offers lift-assisted tubing, kiddy snowmobiles and a kids SuperPlay Zone. The Summer Adventure Park offers more than 20 attractions where you’re in control! Activities include: scenic Sky-Chair rides; interpretive hikes; lift-served mountain biking; the Northwest’s only half-mile, dual Alpine Slide; IndyKarts; Bungee Tower; Reverse Bungee; and much more.  
87000 E. Hwy. 26 | Government Camp, Ore. 97028  
503.222.BOWL (2695)  
For overnight reservations: 1.866.MtHood3  
www.skibowl.com  
www.CollinsLakeResortVacations.com



## 9. Evergreen Aviation & Space Museum

Catch the “Dream to Fly” spirit and explore the fascinating world of aviation and space history. Just an hour from downtown Portland in the beautiful Willamette Valley, the museum is home to Howard Hughes’ “Spruce Goose” and more than 80 other historic aircraft and exhibits. See replicas of WWI aircraft; learn about WWII fighters; view supersonic jets and modern day space vehicles. Hear veterans share firsthand stories, shop in the gift store, enjoy “Spruce Goose” wine tasting, watch a 3-D IMAX® movie and refuel at the café. World class space Museum opening Summer 2008. Open daily.  
500 N.E. Captain Michael King Smith Way  
McMinnville, Ore. 97128  
503.434.4180  
www.sprucegoose.org



## 10. Oregon Wine Tasting Room & Bellevue Market

On your way to or from the Oregon coast, visit the Oregon Wine Tasting Room & Bellevue Market. For 28 years the Oregon Wine Tasting Room has featured an outstanding selection of Oregon wines—more than 300 wines from over 100 wineries. Its selection represents all of Oregon's wine-growing regions and includes offerings from many wineries not regularly open to the public. Create a feast from the market's wide selection of Oregon artisan cheeses, designer chocolates, breads, microbrews, espresso and more. For those who can't get enough of Oregon's bounty, shipping is available. Open daily from 9 a.m. to 6 p.m.; wine tasting hours from 11 a.m. to 5:45 p.m.

19690 S.W. Hwy. 18  
McMinnville, Ore. 97128  
Tasting Room 503.843.3787 | Market 503.843.2947  
[www.oregonwinetastingroom.com](http://www.oregonwinetastingroom.com)



## 16. Seaside Visitors Bureau

Seaside is Oregon's first seashore resort and remains a popular year-round vacation and weekend destination. Visitors delight with dozens of specialty shops, art galleries and antique stores. Our 1.5-mile long oceanfront Promenade is perfect for strollers, joggers and bike riders. The beach is wide and sandy and is available for all kinds of activities, from low rider beach bikes to beach volleyball, wave watching, sand castle building, kite flying or even a hot dog roast. Those young at heart will enjoy such amusements as the carousel, arcades, miniature golf, bumper cars and boats, paddle boats and canoes. We offer family fare, fine dining, ethnic cuisine, spirits, wine and brews, snacks and sweet treats. Seaside is more than just a day at the beach!

7 North Roosevelt  
Seaside, Ore. 97138  
888.306.2326  
[www.SeasideOR.com](http://www.SeasideOR.com)



## 17. Tillamook Cheese Visitor's Center

Located 78 miles west of Portland on the Oregon coast, the Tillamook Cheese Visitor's Center is a must-see Oregon attraction. Take a free self-guided tour; view the cheese making and packaging processes; sample the award-winning cheese; shop for cheese, gourmet foods and unique gifts; enjoy breakfast or lunch in the café and treat yourself to delicious Tillamook Ice Cream in a freshly baked waffle cone. Open daily (excluding Thanksgiving and Christmas): 8 a.m. to 8 p.m. in the summer; 8 a.m. to 6 p.m. in the winter.

4175 Hwy. 101 N.  
Tillamook, Ore. 97141  
503.815.1300 | 800.542.7290  
[www.tillamookcheese.com](http://www.tillamookcheese.com)

